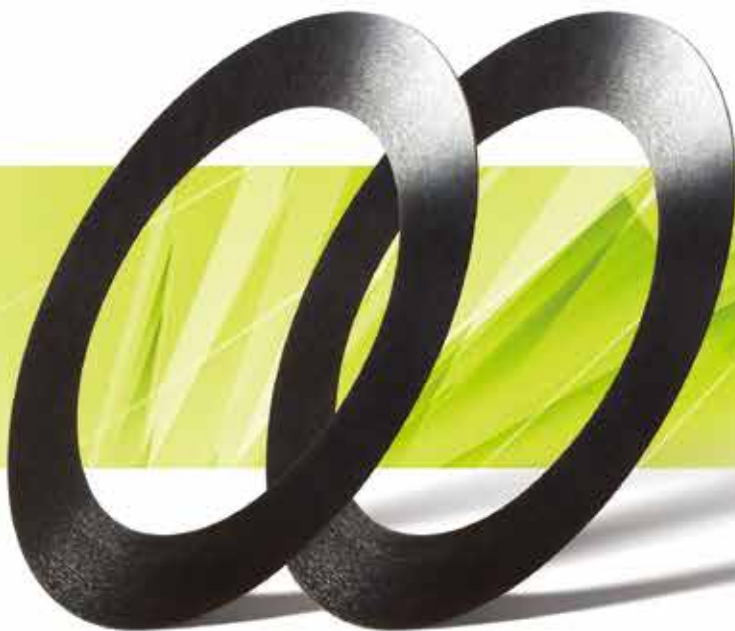


PRECISION ACCRETECH BLADE  
**RESIN BOND BLADES  
FOR GLASS & CERAMICS**  
**GC series**

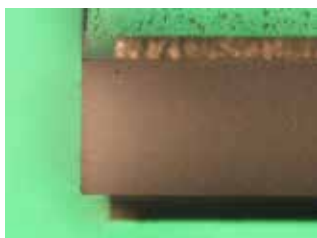


**Resin blade series for hard brittle materials.  
Realizes high cutting quality and long life.**



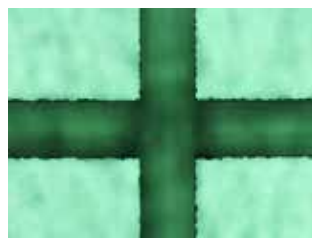
- Resin blade series for glass, ceramics and other hard brittle materials.
- A variation is expanded in pursuit of the high-speed cutting, long life, and stable cutting quality.

■ Processing example



■ Ceramics cutting  
 $n=25,000 \text{ 1/min}^{-1}$   
 $f=8\text{mm/sec}$

■ High-accuracy cutting is now possible in any unstable fixed situation.



■ Glass cutting  
 $n=25,000 \text{ 1/min}^{-1}$   
 $f=10\text{mm/sec}$

■ High-quality cutting is offered through the service life due to its sharp edge and excellent maintainability of shape.



#### ■ Specification and Notation

**1A8**

Shape

**SD**

Grit type

**600**

Mesh size

**R**

Grade

**75**

Concentration

**GR403**

Bond

#### ■ Grit type

SD	Standard
SDC	Coating

#### ■ Availability by mesh size

Mesh size
#400
#500
#600

#### ■ Concentration

50, 75, 100

#### ■ Bond

For Grass	For Ceramics	Bond Type
GR403	CR403	Standard type
GR404	CR404	Long life type

#### ■ Dimension and Notation

**56D**

O.D.

**0.15T**

Blade thickness

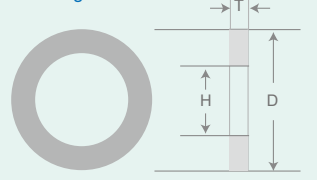
**40H**

I.D.

#### ■ Production Range

O.D. (mm)		Blade thickness (mm)		I.D. (mm)
Availability size	Tolerance	Availability size	Tolerance	Availability size
50 ~ 62	+ 0.1 - 0	0.15 ≤ T ≤ 0.25	± 0.01	40

Drawing Notation



#### ■ Production Range

Mesh size	Blade thickness (mm)	
	0.15 ≤ T < 0.2	0.2 ≤ T < 0.25
#400	●	●
#500	●	●
#600	●	●

Consult us for the specification other than described in this catalogue.

#### ■ Ordering the product

When ordering our product, please refer to our catalog and let us know the details of the product as below.

- 1) **Shape and size/** Detailed blade shape and precision etc.
- 2) **Specifications/** Desired specification as well as the current in-use blade etc.
- 3) **Cutting work and condition/** Machine in use, RPM, feed speed, coolant flow rate etc.

#### ■ Precautions

In order to use the product safely and to bring out the best of the blade's performance, please make sure to thoroughly read the specifications and other related materials of the product.

- \* The catalog is subject to change without notice.
- \* The catalog is not to guarantee the product quality.