

SEMI-AUTOMATIC DICING SAW

SS10

*New standard for the semi-automatic dicer
with new operability*

Fastest and smallest 6-inch dicing machine

Realized the high throughput
and the reduced footprint at
the same time.

Auto alignment

The image-processing engine
accommodates variety of work.

High performance spindle

1.8kw 60,000rpm

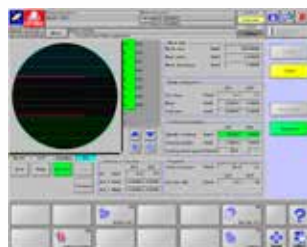
User Friendly

Improved operability with the
17-inch touch panel screen



Main Features

- 1 Corresponds to various types of workpieces as standard
- 2 Standard Spindles up to 60,000rpm
- 3 Enhanced throughput
X axis 600mm/sec, Y axis 160mm/sec, and Z axis 80mm/sec
- 4 17" LCD touch panel and new GUI
(Graphical User Interface)
with simple layout and
large touch-buttons allow users'
interactive operation
- 5 Easy and simple
Kerf check function
(AI kerf check function)
- 6 Stores over 10,000 recipes
- 7 USB port as standard option
(USB memory device can be used as external memory)
- 8 Optimized vacuum controller
reduces 50% of air consumption compared with existing model



▲ New GUI

Specifications

Max. work size		Φ 6inch, □ 152mm
Max. number of frames		6inch
Spindle	Rotation	60,000 min-1
	Max. blade diameter	Φ 60mm (2-Inch)
	Rated Output	1.8kW
X axis	Available cutting range	160mm
	Max. Speed	600mm/sec
Y axis	Available cutting range	162mm
	Max. Speed	160mm/sec
	Accuracy	0.005mm/162mm
Z axis	Stroke	35mm
	Max. Speed	80mm/sec
	Repeatability	0.001mm
θ axis	Range of rotation	320°
Misc	Voltage	3 Phase AC200~220V ±10% (Transformer adoptable)
	Power consumption	4.0 k VA (MAX)
	Air pressure	0.55~0.7MPa
	Avg. Air consumption	180L/min (0.55MPa)
	Cutting Water, and others (pressure)	0.3~0.5MPa
	Cutting Water, and others (Max Flow)	2.0L/min
	Cooling Water (pressure)	0.3~0.5MPa
	Cooling Water (Max Flow)	1.9L/min (0.3MPa)
Exhaust	3m ³ /min more	
Size (W*D*H)		495mm×880mm×1,715mm
Weight		389kg

Operability

Improved the operability with 17" touch panel.

