

# SEMI-AUTOMATIC DICING SAW

# SS20

*New standard for semi-automatic dicers with enhanced operability*

## Footprint

Small footprint with highly stable structure

## Compliant with large wafers

250mm square work size as a standard feature<sup>※</sup>

## High-resolution microscope

Improved resolution

## User Friendly

Improved operability with the 17-inch touch panel screen



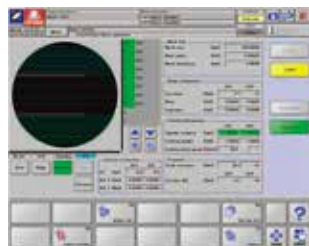
※: Max. work size □ 250mm



ECO design

## Main Features

- 1 Accommodates various types of workpieces as standard option:
  - ① 12-inch frame
  - ② 250 \* 250mm workpiece
- 2 Standard Spindles up to 60,000rpm  
Option: High speed spindle 80,000rpm  
High power spindle 2.2kW(30,000rpm)
- 3 Enhanced throughput  
X axis 800mm/sec, Y axis 300mm/sec, and Z axis 80mm/sec
- 4 17" LCD touch panel and new GUI  
(Graphical User Interface)  
with simple layout and large touch-buttons allow users' interactive operation
- 5 Easy and simple Kerf check function  
(AI kerf check function)
- 6 Stores over 10,000 recipes
- 7 USB port as standard option  
(USB memory device can be used as external memory)
- 8 Ease-of-maintenance  
Wide maintenance door and front-side accessibility allows easy routine maintenance
- 9 Optimized vacuum controller  
reduces 50% of air consumption compared with existing model



▲ New GUI

## Specifications

Max. work size		Φ 8inch, □ 250mm
Max. number of frames		12inch
Spindle	Rotation	60,000 min-1
	Max. blade diameter	Φ 60mm (2-Inch)
	Rated Output	1.8kW
X axis	Available cutting range	260mm
	Max. Speed	800mm/sec
Y axis	Available cutting range	260mm
	Max. Speed	300mm/sec
	Accuracy	0.002mm/260mm
Z axis	Stroke	35mm
	Max. Speed	80mm/sec
	Repeatability	0.001mm
θ axis	Range of rotation	380°
Misc	Voltage	3 Phase AC200~220V ±10% (Transformer adoptable)
	Power consumption	4.0 k VA (MAX)
	Air pressure	0.55~0.7MPa
	Avg. Air consumption	180L/min (0.55MPa)
	Cutting Water, and others (pressure)	0.3~0.5MPa
	Cutting Water, and others (Max Flow)	2.0L/min
	Cooling Water (pressure)	0.3~0.5MPa
	Cooling Water (Max Flow)	1.9L/min (0.3MPa)
Exhaust	5m <sup>3</sup> /min more	
Size (W*D*H)		890mm×1,000mm×1,560mm
Weight		792kg

## Maintenance

Large access area is secured.

